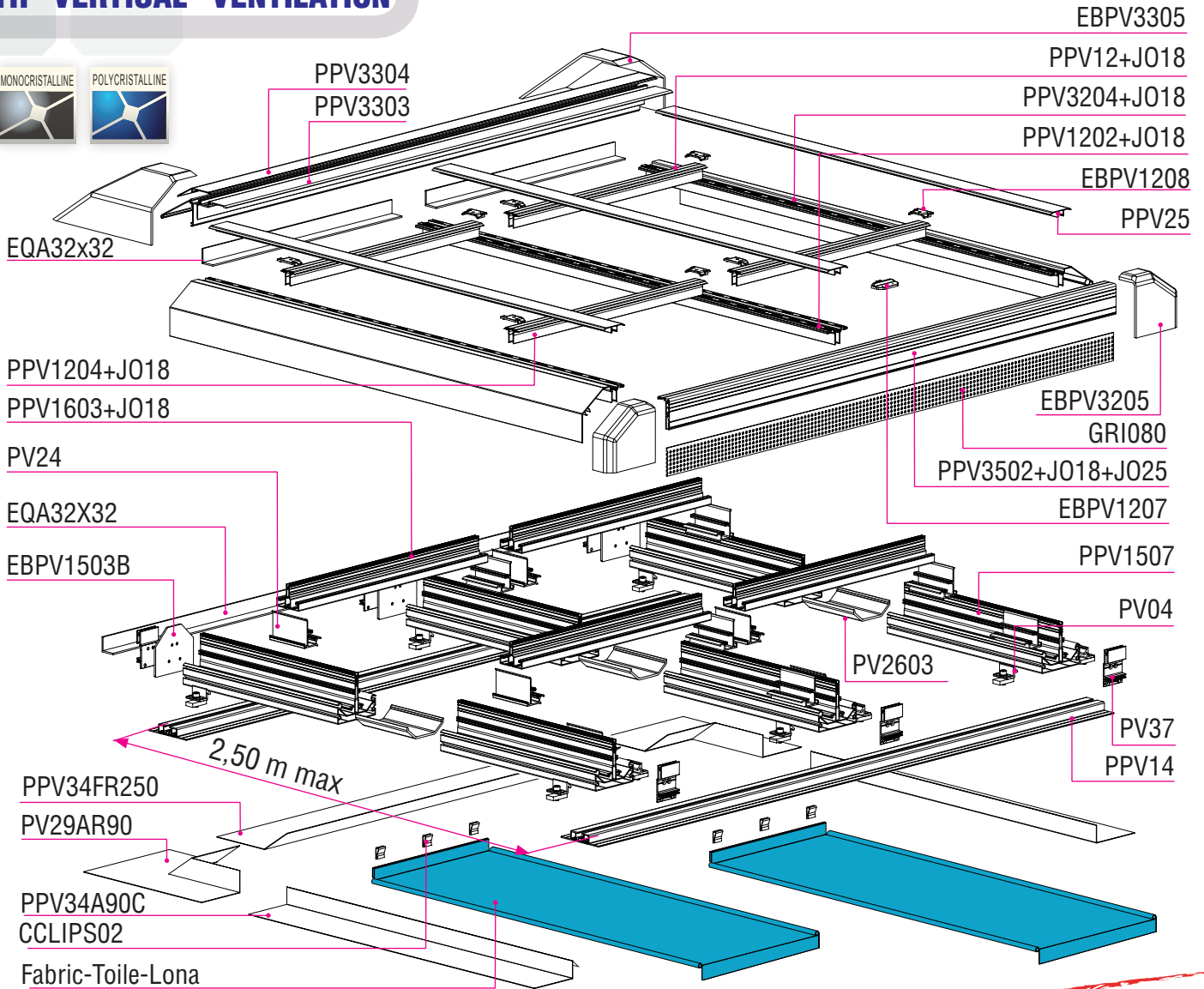


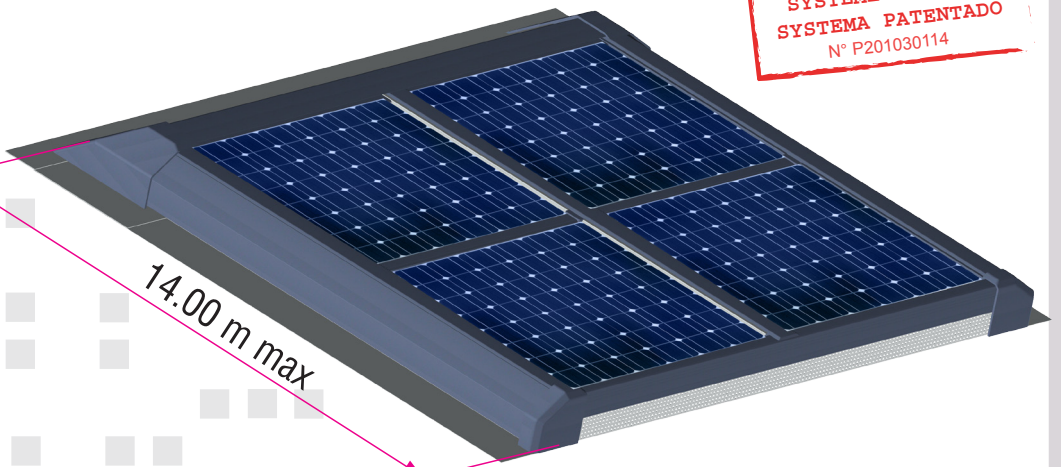
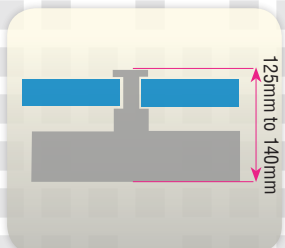
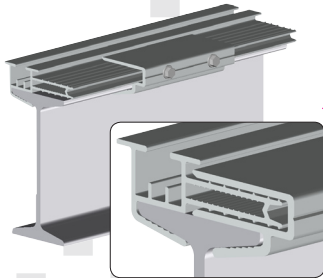
INTEGRATED SYSTEM 115

COMPLETE (35 à 50 C)
INDUSTRIAL OR AGRICULTURAL
WITH VERTICAL VENTILATION

115 (35 to 50 C) - Integrated mounting system for industrial or agricultural buildings with vertical ventilation
 Système intégré complet 115 (35à50C) industriel ou agricole à ventilation verticale
 Sistema 115 integrado tejado industrial o agrícola con ventilación vertical
 Dachintegrierte Unterkonstruktion 115 für industrielle oder landwirtschaftliche Bedachungsanlage mit vertikaler Lüftung.

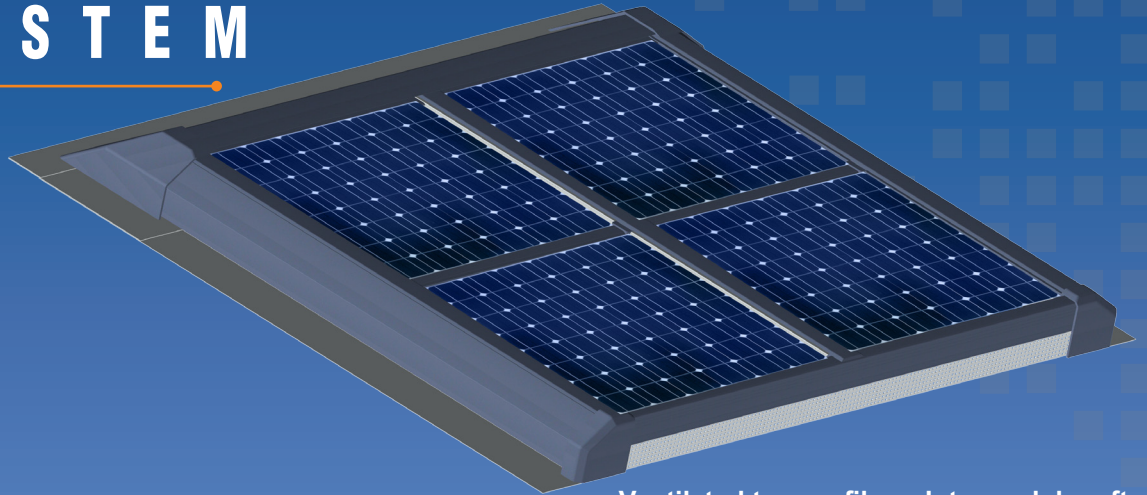


PATENTED SYSTEM
 SYSTÈME BREVETÉ
 SISTEMA PATENTADO
 N° P201030114



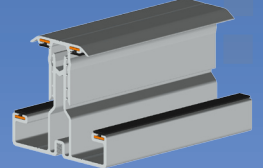
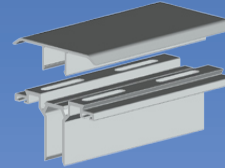
INDUSTRIAL OR AGRICULTURAL COMPLETE INTEGRATION WITH VERTICAL VENTILATION

115 INTEGRATED SYSTEM

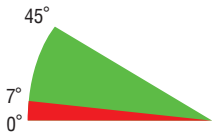


Ventilated top profile

Intermodule rafter



+ ADVANTAGES



Tilt angle

- Vertical ventilation system
- Cable duct
- Internal connection
- Up to 14 m high

For 35mm to 50mm thick panels



LANDSCAPE INSTALLATION
RECOMMENDED



FOR FRAMED PANELS

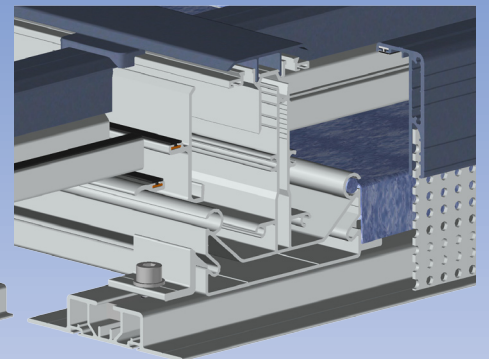
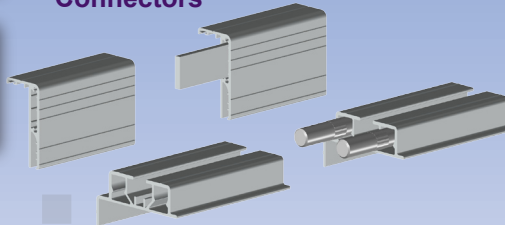
Structure components:

- Aluminium profiles
- Aluminium foundry pieces (AS13)
- A2 stainless steel fastenings RAL 7016 + EPDM washer and joint

Finish:

- Mill finish
- Powder coated with PTFE textured finish finish RAL 7016

Connectors



Cable duct

